

motif
MEDICAL



Motif Aura Glow™ Operational Manual

1. Introduction

Meet The Motif Aura Glow™

Introducing the Motif Aura Glow™ our newest wearable breast pump designed for convenience and comfort! Glow with a built-in spotlight: Shine a spotlight on your milk output with the pump's built-in light, making it easy to monitor at any time, day or night.

All Motif Medical® products purchased from authorized retailers come with a manufacturer's warranty stating that product will be free from defects in workmanship and materials; for 2-years on breast pumps, for 1-year on internal batteries, and for 90-days on breast pump parts.

Be sure to register your breast pump upon receiving it:
motifmedical.com/warranty-registration/



Index

1.	Introduction	2
2.	Highlights	7
3.	Intended Use (Indications for Use)	8
4.	Symbols	9
5.	Safety	11
5.1	Prohibitions, Warnings, and Cautions	11
6.	Parts	14
6.1	What's Included	14
6.2	Buttons and Features	16
6.3	Battery Information	18
6.4	Settings and Modes	19
7.	Sterilization and Cleaning	21
8.	Operating Your Breast Pump	24
8.1	Breast Shield Sizing	26
8.2	Assembling The Motif Aura Glow™ Pump	27
8.3	Turning The Motif Aura Glow™ Pump On/Off	30

9.	Using Your Motif Aura Glow™ Pump	31
9.1	Pumping Guide	31
9.2	Getting Ready to Pump	32
9.3	How to Wear the Pump in a Bra	33
9.4	Aligning The Breast Shield	34
9.5	Expressing Your Milk	35
9.6	After Pumping	38
9.7	Storing Breast Milk	40
10.	Troubleshooting	42
10.1	Troubleshooting	42
10.2	Disposal	44
10.3	When to Replace Parts	45
11.	Technical Information	47
12.	Warranty	48



2. Highlights

Designed to fit in your bra, the Motif Aura Glow™ is hands-free, powerful and discreet.

Wearable Breast Pump

No need to bother with messy cords and tubing. Simply put on the breast pump with a standard bra and pump conveniently, hands-free.

New Pumping Modes

Includes two custom modes, designed by a lactation professional, to maximize milk collection and minimize the time spent adjusting pump settings.

Backlit LCD Screen

Easy-to-read screen that won't strain your eyes.

Closed System

Backflow protection keeps the motor clean, preventing contamination.

Rechargeable Battery

With a battery life of 90 minutes between charges, the Motif Aura glow™ is portable, allowing for ease of use while pumping on the go.

Interior Glow

Shine the spotlight on your milk output while pumping, thanks to the pump's built-in light.

Quiet Motor

A low hum that won't wake your baby.

Super Lightweight

Weighs less than a pound for perfect portability.

3. Intended Use (Indications for Use)

The Motif Aura Glow™ Breast Pump is intended for use by lactating women to express and collect breast milk. The Motif Aura Glow™ can be used as a single or double pump and is only intended for personal use.

Please read this document completely and follow the instructions exactly. To prevent personal injury and material damage, please observe the warning and safety information provided in this document.



Warning: To avoid minor injury

- Sharing a breast pump can cause health hazards and void manufacturer's warranty.

4. Symbols



Warning: Potentially dangerous situation that could result in serious injury



Caution: A possibly dangerous situation that could result in slight bodily injury



Notice: Useful information or information you need to know when using this product



Manufacturer



Date of manufacture



Serial number



Manufacturer's catalog number



Refer to instruction manual

IP22 Ingress protection



Battery State



DC



Transport / Storage Humidity



Operation Humidity



Operation Temperature



Storage Temperature















Operating Pressure



Transport / Storage Pressure

4. SYMBOLS

-  **Fragile**
-  **Do not pile**
-  **This way up**
-  **Keep Dry**
-  **Good Manufacturing Practice Logo**
-  **Type BF applied part**
-  **This product should not be mixed with other commercial waste for disposal**
-  **Play/Pause Button**
-  **Increases level of suction**
-  **Decreases level of suction**
-  **Mode Button**
-  **Nightlight Button**

5. Safety

5.1 Prohibitions, Warnings, and Cautions



Warning: To prevent voiding of warranty

- Do not modify this equipment without authorization of the manufacturer.
- Do not disassemble or modify the product. The device has no user-serviceable parts.
- Use of power adapters other than those specified in this user manual can cause internal damage to the pump or cause the pump to function improperly. Therefore, using other power adapters will void your Motif warranty.



Warning: To reduce the risk of electrocution

- Do not use while bathing.
- Do not place or store product where it can fall or be pulled into a tub or sink.
- Do not place or drop into water or other liquid.
- Do not reach for a product if it has fallen into water. Immediately unplug from electrical outlet.
- Do not sanitize the kit in microwave oven. Never immerse main body in water.



Warning: To avoid fire, electrocution, or serious burns

- Do not leave the product unattended when plugged into an electrical outlet.
- Close supervision is necessary when this product is used near children or persons with disabilities.
- Place product out of reach of children.
- Use the product only for its intended use as described in this manual. Do not use attachments not recommended by the manufacturer.
- Never operate this product if it has a damaged cord or plug, it is not working properly, or if it has been dropped or damaged, or dropped into water.
- Keep cord away from heated surface.
- Never use while sleeping or when drowsy.
- Never drop or insert any object into any opening.

- Do not operate where aerosol (spray) products are being used or where oxygen is being administered.
- Do not disassemble or modify the product. When disassembled by unauthorized person, it voids warranty.
- Do not unplug power adapter/charger by pulling on the cord.
- Do not inhale or swallow small parts.
- Allergic reactions may occur.
- Lint, dust, light (including sunlight), etc can affect safety and essential performance.
- Avoid direct sunlight and dust, and store in a dry and cool area.
- Keep out of reach of children to prevent possible suffocation or injury from swallowing small parts.



Warning: To avoid health risk and reduce the risk of injury

- If you are a mother who is infected with Hepatitis B, Hepatitis C or Human Immunodeficiency Virus (HIV) pumping breast milk will not reduce or remove the risk of transmitting the virus to your baby through your breast milk.
- Before each use visually inspect the individual components for cracks, chips, tears discoloration or deterioration. In the event that damage to the device is observed, please discontinue use until the parts have been replaced.
- This product is intended for use by a single user only and should not be shared between users.
- Do not drive while pumping.
- Never use while pregnant, as pumping can induce labor.
- Clean and sanitize all parts that come in contact with your breast and breast milk prior to first use.
- Wash all parts that come in contact with your breast and breast milk after every use.
- Do not continue pumping for more than 2 consecutive pumping sessions if no results are achieved.
- Do not thaw frozen breast milk in a microwave or in a pot of boiling water.
- If any part becomes moldy, discontinue use and replace with new parts.



Caution: To avoid minor injury

- Pump only with the breast pump in an upright position.
- Make sure the voltage of the power adapter is compatible with the power source.
- Plug the USB-C cord into the breast pump first and then into the wall socket.
- Do not use antibacterial or abrasive cleaners/detergents when cleaning breast pump or breast pump parts.
- Never put the breast pump motor in water or sterilizer as you can cause permanent damage to the breast pump.
- Do not attempt to remove the breast shield from your breast while pumping. Turn the breast pump off and break the seal between your breast and breast shield with your finger, then remove breast shield from your breast.
- If pumping is uncomfortable or causing pain, turn the unit off, break the seal between the breast and breast shield with your finger and remove the breast shield from your breast.
- Plastic breast pump parts become brittle when frozen and may break when dropped.
- Breast pump parts may become damaged if mishandled, e.g. dropped, over-tightened or knocked over.
- Take appropriate care in handling breast pump parts.
- Do not use the breast milk if bottles or components become damaged.

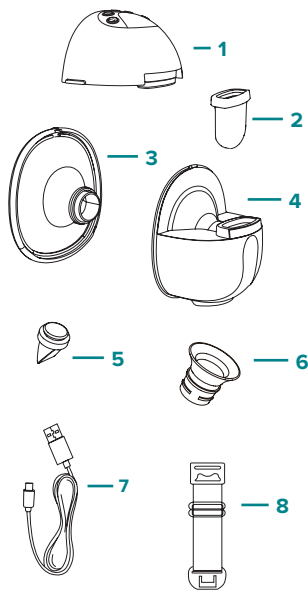
6. Parts

6.1 What's Included

i While unpacking the box, make sure all of the following components are enclosed.

- 1 Breast Pump Motor (2)
- 2 Silicone Diaphragm (2)
- 3 Breast Shields (24 mm) (2)
- 4 180 mL Collection Containers (2)
- 5 Valve (2)
- 6 Flange Inserts (15 mm, 17 mm, 19 mm, 21 mm)
- 7 USB Charging Cable (2)
- 8 Bra Strap Adjusters (2)

Not Pictured:
Cleaning Brush (1)
Dust Covers (2)



Additional accessories and parts available for the Motif Aura Glow™ breast pump:

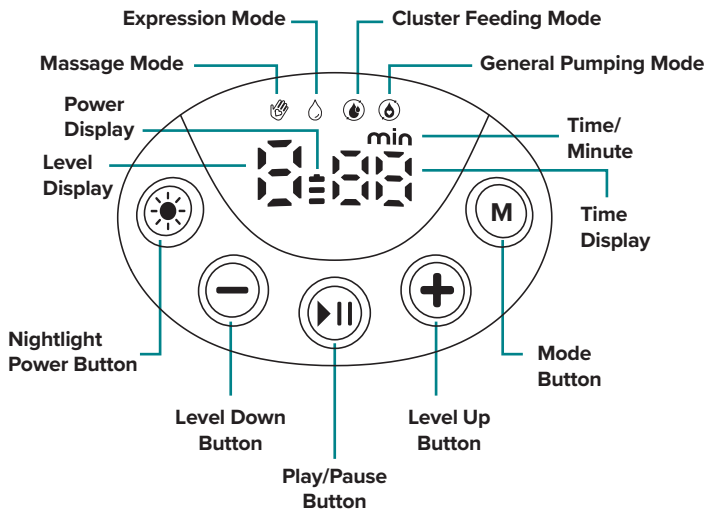
- Full resupply kit with replacement parts
- Individual parts
- 27 mm breast shield
- Flange inserts: 14/13/12/11 mm
- Motif Aura Glow™ bottles
- Motif Aura Glow™ nipples



Find replacement parts and additional supplies for the Motif Aura Glow™ at:
motifmedical.com/replacement-supplies/

6.2 Buttons and Features

LCD SCREEN



BUTTON CONTROL



Play/Pause Button

Long hold the play/pause button to turn the pump on or off.

When the pump is on, short press the play/pause button to pause or un-pause the pump.



Level Up Button

Short press to increase the vacuum (suction) level during any mode.



Level Down Button

Short press to decrease the vacuum (suction) level during any mode.



Nightlight Button

Press and hold the nightlight button to adjust the light brightness to your preferred level. Then, short press to turn on or off. The pump remembers the light setting.

Note: The nightlight will turn off automatically after 30 seconds. The nightlight is controlled independently of the pump and does not turn off when the pump is powered off.



Mode Button

Short press to switch between pumping modes.

6.3 Battery Information

DIFFERENT LEVELS OF CHARGE



Low Battery



1/3 Charge

*Connect USB
cable soon*



2/3 Charge



Full Charge

*Operating time:
approx. 90 min*

WHEN CHARGING

The three bars flash when charging. When the battery is fully charged, all three bars are lit and do not flash.



Please charge the pump when there is only 1 bar on the battery display and it is blinking. Do not use the pump when charging.



After each use check the battery level by pressing the power button. If the battery is low, charge with a DC 5V = 1A charger.

6.4 Settings and Modes

Suction Settings

The suction level on your breast pump refers to the suction strength. When you are using your Motif Aura Glow, you will usually find that expressing is most effective on the highest suction level that you are comfortable with.

It is important not to set the suction level so high that it makes you uncomfortable, as the resulting pain will hinder your milk flow.

The Motif Aura glow™ has 4 pumping modes. Massage, expression, and general pumping modes have 9 levels. Cluster feeding mode has 5 levels.

Standard Modes

Classic modes for efficient let down and milk expression.



Massage Mode

Suction pattern with fast cycles and low vacuum to help with letdown and to start the flow of milk.

- Massage Mode has 9 suction levels



Expression Mode

Suction pattern with slower cycles and higher vacuum to express milk gently and efficiently.

- Expression Mode has 9 suction levels

Specialized Modes

The Motif Aura glow™ includes two custom modes, designed by a lactation professional, to maximize milk collection and minimize the time spent adjusting pump settings.



Cluster Feeding Mode

Mini power pumping mode that imitates a newborn's cluster feeding to help boost milk supply. Cluster feeding naturally occurs when a baby breastfeeds multiple times within a short period of time only taking quick breaks, signaling the body to produce more milk. Within each level, this mode includes 3 pumping steps with pauses of low suction in between.

- Cluster Feeding Mode has 5 suction levels



General Pumping Mode

Mode for everyday use that begins in massage mode and switches to expression mode after 2 minutes. This repeats twice for 2 letdowns.

After pumping with standard massage and expression modes on this pump, use the same expression mode level with the general pumping mode for the same suction strength.

- General Pumping Mode has 9 suction levels

7. Sterilization and Cleaning

- i** Before initial use sterilize each part of the:
- Diaphragms
 - Valves
 - Flanges Inserts
 - Breast Shields
 - Collection Containers

Repeat sterilization of listed parts once daily after pump use.

Sterilization Instructions

1. If parts have been used previously, follow cleaning instructions first.
2. Place your breast pump parts in a pot and cover them with water.
3. Bring water to a boil and let boil for five minutes.
4. Remove parts with clean tongs.
5. Place breast pump parts on a clean paper towel or dish towel and allow to air dry completely.

- i** Do not sterilize using a microwave, as it could cause the flange-collection cup assembly to leak.

Cleaning Instructions

1. Thoroughly wash your hands with soap and warm water.
2. Disassemble each breast pump part that came into contact with breast milk. This includes valves, diaphragms, breast shields, collection containers, and flange inserts.
3. Rinse each part with cool water to remove milk residue.
4. Options for washing pump parts:
 - Separately wash each part in the sink with a soft brush and soap. (Be sure to use a new brush or washcloth exclusively for breast pump parts.)
 - Soak each part in warm, soapy water for 5 minutes and then thoroughly rinse them.
5. Dry each part with a clean towel or allow to fully air dry on a sanitary surface such as a clean paper towel or clean dish towel. Do not pat dry.
6. Wipe the outside of your breast pump motor with a dry, clean towel. *Do not wash the outside of your breast pump with water or get your breast pump wet when cleaning it.



It is not recommended to wash and dry Motif Breast Pump parts in the dishwasher. There is no standard temperature for dishwashers and some may warp parts. Parts damaged in the dishwasher are not covered under warranty.

After Every Use

1. Thoroughly wash your hands before handling each breast pump component.
2. Disassemble each part that comes into contact with breast milk including the valve, diaphragm, breast shield, collection container, and flange insert.
3. Rinse each part in cool water to remove milk residue.
4. Options for washing individual parts:
 - Separately wash each part with a soft brush or a clean dishcloth.
 - Soak each part in warm, soapy water for 5 minutes then thoroughly rinse them.
5. Dry each part with a clean towel and/or allow them to completely air dry on a sanitary surface.
6. Wipe the main body with a dry, clean towel after each use. *Never use water to wash the outside of your breast pump.
7. Store parts after they completely dry in a clean bag or container. *Do not store any damp parts.

8. Operating Your Breast Pump

8.1 Breast Shield Sizing

UNDERSTANDING SIZE

Pumping should not hurt. This guide is a starting point to help determine your optimal breast shield size based on your nipple diameter.

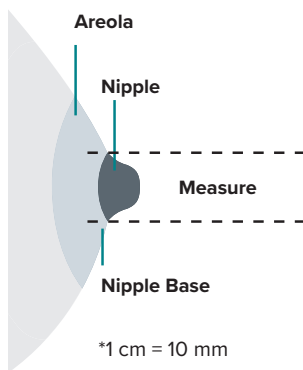
How To Find The Right Size Breast Shield For You

Step 1

Using a ruler, measuring tape, or flange sizing tool, measure your nipple diameter at the widest part (usually the base) in millimeters (mm). Measure before pumping. **Do not include any areola.** It is important to measure both nipples as they may be different sizes.

Step 2

Add 0-3 mm to your nipple size to find your breast shield size. Your nipple should move easily in the breast shield tunnel and no areola or other breast tissue should enter the breast shield tunnel. You may need to try more than one size to find the most comfortable and effective fit.

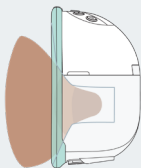


Example: If your nipple diameter measures 16 mm your breast shield sizing range would be 16 mm - 19 mm.

The pump comes with a 24 mm breast shield and 15 mm, 17 mm, 19 mm, and 21 mm inserts. 27 mm breast shields are available separately.

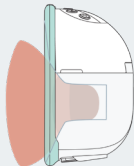
See below for the recommended breast shield size based on your measurements. Most mothers find that adding 0-3mm to their nipple measurement results in a comfortable and effective flange fit.

TEST YOUR BREAST SHIELD SIZE



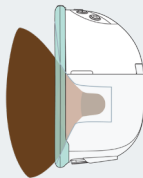
Good Fit

Pumping is comfortable and effective.



Too Small

Painful rubbing.
Try a larger size.



Too Large

Aerola is being pulled into the flange tunnel.
Only the nipple should enter the flange tunnel.

FLANGE & INSERT SIZE CHART

Flange	Fits Nipples
11	8-11 mm
12	9-12 mm
13	10-12 mm
14	11-14 mm
15	12-15 mm
16	13-16 mm
17	14-17 mm
19	16-19 mm
21	18-21 mm
24	21-24 mm
27	24-27 mm

Should you try a new breast shield or flange insert size?

- Does your nipple rub sides of the tunnel to the point of causing discomfort?
- Do you see excessive areola being pulled into the tunnel?
- Do you see any redness?
- Is your nipple or areola turning white?
- Do you feel unexpressed milk after pumping?

If you answered “YES” to any of these questions, consider trying a new size by following the measuring instructions above.

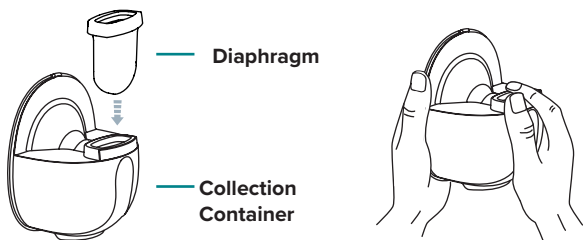
If you are still unsure if you selected the correct size, see a lactation consultant, or breastfeeding specialist for assistance in choosing the right size breast shield.

8.2 Assembling The Motif Aura Glow™ Pump

1. Make sure that you clean the pump as instructed in this user manual. To avoid leakage, remove any residue around the rim before assembling. Wash your hands thoroughly before you assemble cleaned components.
2. Install the valve in the collection container, paying attention to the direction of installation.

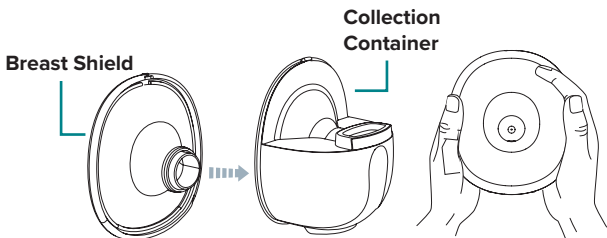


3. Put the silicone diaphragm into the collection container and press down firmly to ensure a perfect seal.

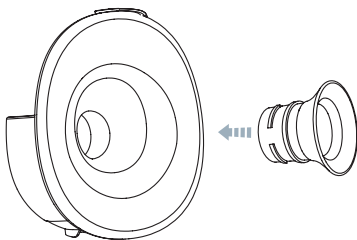


8. OPERATING YOUR BREAST PUMP

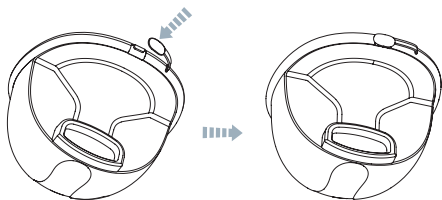
4. To install the breast shield on the collection container, make sure to align the diversion groove on the breast shield with the backflow groove on the collection container and then press the edges with both hands to ensure the seal is in place.



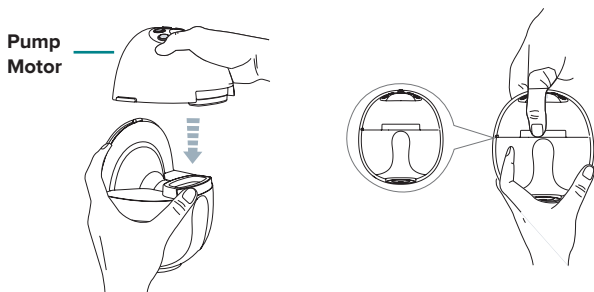
5. Measure your nipple using the included nipple ruler. Add 0 - 3 mm to find your nipple size. Add flange insert if needed.



6. Attach the milk stopper to the top of the collection container, making sure the stopper is perfectly aligned with the pour spout. Press the plug in firmly to ensure a tight seal and no milk leakage.



7. Install the pump motor on the collection container by aligning the notch under the main body with the silicone diaphragm and pressing down firmly to ensure a complete seal.



8.3 Turning The Motif Aura Glow™ Pump On/Off



Press the **PLAY/PAUSE** button

Long press the play/pause button to turn the pump on.

Short press the play/pause button to start the pump.



Press the **MODE** button

Press the mode button to change modes



Adjust suction level to preferred comfort level



Press the **PLAY/PAUSE** button

Long press the play/pause button to turn the pump off.



The pump remembers the suction settings you used during your last session. When the pump is powered on again, it automatically starts in the mode and level you used last time.



Charge the battery immediately when the battery symbol is flashing on the screen.

If the breast pump remains unused for a long period of time, make sure that the battery is fully charged before use. Unplug the power adapter from the breast pump immediately after you are finished charging your device.

9. Using Your Motif Aura Glow™ Pump

9.1 Pumping Guide



Even when you are using the breast pump, it is recommended to breastfeed your baby whenever you can.

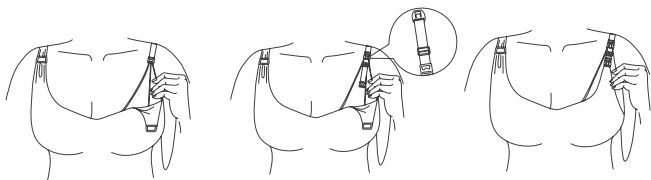
- Gently massage your breasts or apply warm compresses from the breast toward the nipple before starting your pumping session.
- Express milk from each breast for 10 - 15 minutes. It is recommended to pump frequently rather than pumping for a long duration. (Every 2 - 3 hours, 8 times a day.)

9.2 Getting Ready to Pump

1. Check to see if you are using the correct size breast shield or flange insert. See section 8.1 Breast Shield Sizing for more details.
2. Wash hands thoroughly.
3. Check each component for wear or damage before use and replace parts when/if necessary.
4. Assemble the pump as described in 8.2 Assembling the Pump.
5. Check the battery level of the pump to ensure it is fully charged.
6. Place the pump on your breast underneath your bra. Adjust the length of the bra straps or use the bra strap adjusters to make pumping more comfortable. See section 9.3 How to Wear the Pump in a Bra for more details.
7. Ensure the nipple is properly centered in the tunnel. See section 9.4 Aligning the Breast Shield for more details.

9.3 How to Wear the Pump in a Bra

1. Place the breast pump on your breast, underneath your bra.
2. Adjust the length of the bra straps to make suction more comfortable. If the bra straps are not long enough, use the bra strap adjuster to make pumping more comfortable.
3. With the pump centered on your nipple, hook one end of the strap adjuster on the nursing bra and hook the other end of the bra on the bra strap adjuster.



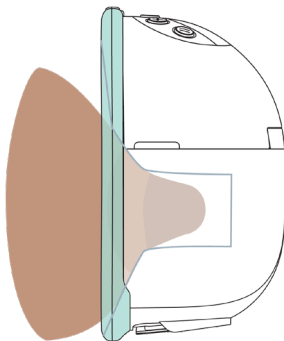
9.4 Aligning The Breast Shield

Center the breast shield on your breast so that the nipple is drawn into the breast shield tunnel.

It's important that the breast shield is positioned properly before pumping begins to avoid any pain that may be caused by rubbing or twisting of your nipple onto the side of the breast shield. If double pumping, place the second breast shield in place as well.

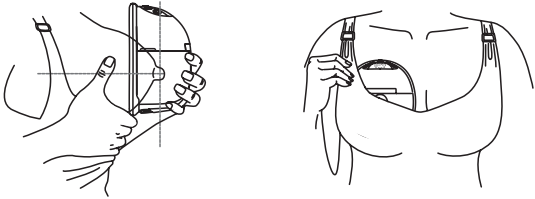
If you're concerned about the fit or want to ensure you've placed the breast shield on correctly, please reference the "Test your breast shield size" portion of Section 8.1 Breast Shield Sizing.


While some discomfort may be felt when first using a breast pump, using a breast pump should not cause pain. If you are unsure about breast shield sizing, please contact a healthcare professional or Motif Medical® representative who can help you get a proper fit.

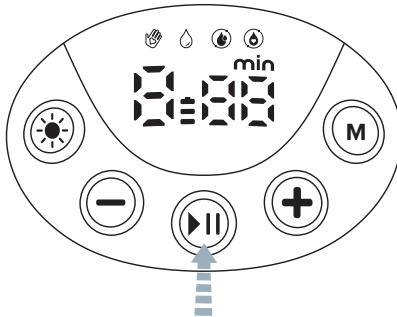






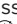

9.5 Expressing Your Milk

1. Press the breast shield firmly against the breast, leaving no gaps and making sure the nipple is centered. Keep the pump upright.





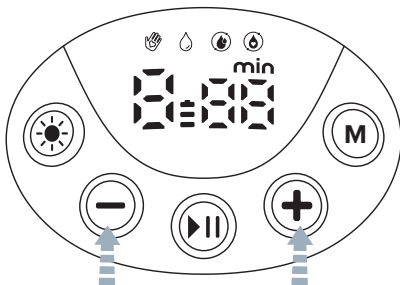
2. Long press the  PLAY/PAUSE button to start the breast pump. The screen will light up.



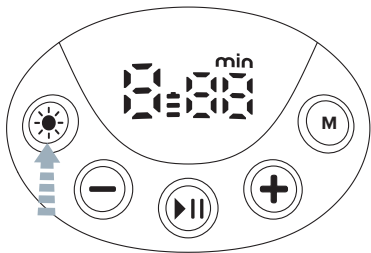
3. Short press the  PLAY/PAUSE button to start the pump. Press the  MODE button to switch modes after starting the pump. There are four modes: massage , expression , cluster feeding , and general pumping .



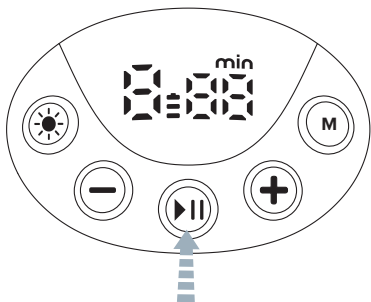
4. There are 9 levels in massage, expression, and general pumping modes. There are 5 levels in cluster feeding mode. You can choose the suction that makes you comfortable by short pressing the  LEVEL UP and  LEVEL DOWN button.



5. Short press the  button key to turn the nightlight on to check milk levels.

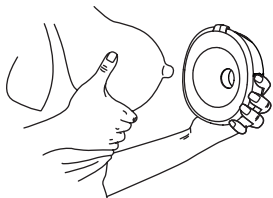


6. Long press the  PLAY/PAUSE button to turn off the breast pump.

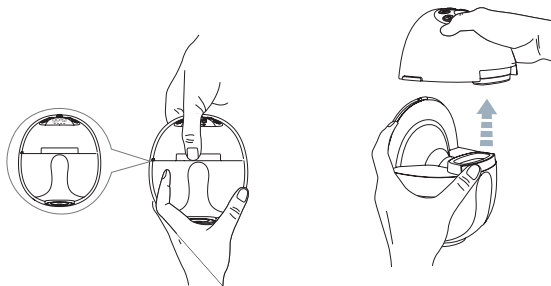


9.6 After Pumping

1. When you are finished expressing, long press the PLAY/PAUSE button to turn off the pump and slide a finger between your breast and the breast shield to separate them. Carefully remove the pump from your breast keeping it upright.

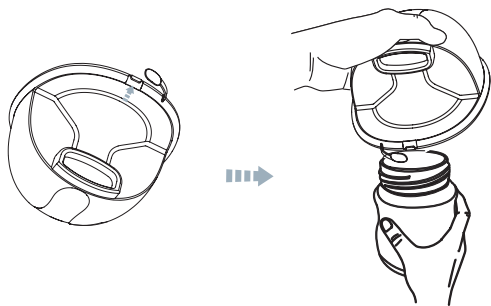


2. Gently pull back on the top of the breast shield and pull the pump motor off the collection container using the wings on the side.



Do not pour milk from the collection container with the motor still attached.

3. Remove the stopper from the pour spout. To avoid spilled milk, carefully align the pour spout with the bottle and pour milk into the bottle.



Do not store milk in the collection container.

9.7 Storing Breast Milk

- i** When storing breast milk in a milk storage bag, make sure to only use non-toxic markers when writing on the bag.

		Storage Locations / Temperatures		
		Room Temperature 77°F (25°C) or colder	Refrigerator 40°F (4°C)	Freezer 0°F (-18°C) or colder
Type of Breast Milk	Freshly expressed or pumped	0 - 4 hrs	0 - 4 days	0 - 6 mo. is best 6 - 12 mo. is acceptable
	Thawed (previously frozen)	1-2 hrs	0 - 24 hours (one day)	* Never refreeze human milk after it has been thawed
	Leftover from a Feeding (baby did not finish the bottle)	0 - 2 hrs after the baby is finished feeding		

Source: CDC.gov

How to Thaw Breast Milk

1. Always make sure to check the date on the milk's container before using. Do not use undated milk, or milk that has been stored longer than recommended.
2. Thaw frozen milk in the refrigerator or under cool, running water.
3. Heat the milk under warm, running water and gently swirl the container to mix the milk. Be sure not to shake the bottle.
4. If warm water is not available, heat a pot of water on the stove. Once the water is warm, not boiling, remove the pot from the stove and place milk container in the pot. Never warm the milk container directly on the stove.
5. Never microwave breast milk because microwaves can cause dangerous hot spots that could burn you or your baby.
6. Always test the temperature of the milk on the inside of your wrist before feeding it to baby. The milk should feel warm, not hot.
7. After thawing, milk should be stored in the refrigerator for no more than 24 hours.
8. Never refreeze thawed milk. Throw away previously frozen milk that is not used within 24 hours.

10. Troubleshooting

10.1 Troubleshooting

Condition	Possible Causes	Solutions
No or low suction	Pump motor failure	Test the suction power: separate the main body from the cup, put the main body in the palm of your hand, and check whether there is suction in the palm of your hand. If there is no suction, there is an issue with the pump motor.
	Improper installation	Check the valve, diaphragm, and breast shield for damage and make sure they are properly connected. Disassemble and properly reassemble.
	Incorrect breast shield size	Check to ensure use of the correct breast shield size. If any damage to the breast shield is apparent, replace with a new breast shield.
Too much suction, pain when pumping	Suction level too high	Set to the lowest suction level and consult your lactation consultant or physician.
	Incorrect breast shield size	Nipples may become sore when pumping. Check to ensure correct breast shield or flange insert size.
Leaking milk	Flange not sealed	Run fingers around the outside of the breast shield and press firmly to seal to the collection container.
	Defective assembly kit	Examine breast shield and collection container for damage. If any damage is apparent, replace with new parts.

No power	Low battery	Leave pump to charge for a full 2 hours using a certified 5 V power adapter and then try again.
Not mute		Breast pump will produce some sound within the standard range of 45-55 dB.
Discoloration/ deformation	Incorrect cleaning or old parts	Follow proper cleaning instructions per this manual. Keep parts away from heat or direct sunlight. If any damage to the parts is apparent, replace with new parts.



If you need additional help troubleshooting your breast pump, please reach out to the Motif Medical® Customer Service Department. You can access them online at [motifmedical.com](https://www.motifmedical.com) via chat, through email at hello@motifmedical.com or by phone (844) 272-8390.

10.2 Disposal

Please send components that are no longer used to Motif Medical® or properly dispose of the device in accordance with local, state, and federal regulations.



As electrical and electronic equipment, the device must be disposed of according to a specialized procedure for collection, pick-up and recycling or destruction in accordance with Directive 2012/19/EU of the European Council on Waste Electrical and Electronic Equipment [WEEE].

10.3 When to Replace Parts

How often you should replace your breast pump supplies can vary based on how often you use your breast pump. For example, a mom that exclusively breast pumps about 9 times a day and sanitizes their parts more frequently than a mom that only pumps 3 to 4 times per day will need to replace her parts more often.



A good reference to keep in mind is replacing your parts every 90 days.

Replacing your Valves

The silicone valves need to be replaced between 1 to 3 months based on how frequently they're used because they can affect suction power.

- It's important to remember that smaller breast pump parts may not show any visible damage.

Replacing your Diaphragms

The diaphragms may stretch and lose elasticity over time, making them less effective at keeping moisture out of your breast pump motor.

- They need to be replaced between 3 to 6 months depending on use.
- If you see any tearing, warping, rips, or discoloration then it's time to replace them.

Replacing your Silicone Breast Shield and Flange Inserts

Your silicone inserts will collect residue, can crack, or become discolored over time depending on how often you pump.


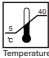


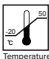

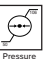
- They should be replaced every 6 months.
- However, keep an eye out for any cracks, tears, or warping because that could indicate that need to be replaced sooner.
- The discoloration will not affect how well your pump works but may not be pleasing to the eye.

Replacing your Collection Containers

Your collection containers will collect residue, can crack, or become discolored over time depending on how long you pump.

- They should be replaced every 6 months.
- However, keep an eye out for any creaks, tears, or warping because that could indicate that it needs to be replaced sooner.
- The discoloration will not affect how well your pump works but may not be pleasing to the eye.

11. Technical Information

Contents	Description	
Rated voltage and frequency	Input: 5 V, 1 A	
Battery / Life	3.7 V, 1000 mAh, Lithium, 90 mins	
Protection on electronic shock	Class II,  TYPE BF: Breast Shield	
Degree of protection against ingress of water	IP Classification: IP22	
General Pumping Features		
Operation Mode (Continuous operation)	Expression Mode, Massage Mode, Cluster Feeding Mode, General Pumping Mode	
Suction Levels	Expression Mode	1 - 9 Levels
	Massage Mode	1 - 9 Levels
	Cluster Feeding Mode	1 - 5 Levels
	General Pumping Mode	1 - 9 Levels
Suction Cycles	Fixed CPM	
Timer Function	Automatic Off (30 min ± 1 min)	
Noise	< 45 dB	
Backflow Protection	Yes	
Operating Conditions		
Ambient temperature	41 to 104°F	   Temperature Humidity Pressure
Relative humidity	15 to 90%	
Air pressure	90 to 106 kPa	
Transport and Storage Conditions		
Ambient temperature	-4 to 140°F	   Temperature Humidity Pressure
Relative humidity	15 to 90%	
Air pressure	90 to 106 kPa	

12. Warranty

Be sure to register your pump upon receiving it at: motifmedical.com/product-registration

All Motif Medical® products purchased from authorized retailers come with a manufacturer's warranty stating that product will be free from defects in workmanship and materials; for 2-years on double-electric breast pumps, for 1-year on internal batteries, and for 90-days on breast pump parts and the Manual Breast Pump.

Motif's sole obligation under this express warranty shall be, at Motif's discretion, to replace or repair the product or part(s) thereof (in case the product is not available, to deliver a similar type of product).

The warranty starts on the proven purchase date and is a single warranty ending from this starting date. The warranty does not extend if the product is replaced. The warranty is non-transferable. Motif breast pumps are single-user pumps and the warranty only applies to the original pump user.

The warranty covers manufacturing defects. Motif Medical® cannot replace a pump part which was damaged by the end user while using the pump. The warranty does not cover lost or stolen items, normal wear and tear to breast pump parts, and items that are misused, abused or improperly stored. Failure to comply with operating instructions or alterations made to the product will result in the warranty being voided.

Warranty products are shipped using standard ground. Express; overnight and 2-day shipping are available for an additional fee. The warranty is valid in the United States only. Warranty items will only be shipped to addresses in the US.

 **If you have a warranty question, you can call 844-272-8390, visit us online at motifmedical.com, or email customer service at hello@motifmedical.com**





Manufactured for:

Motif Medical®, LLC
8 The Green, Suite 5601
Dover, DE 19901

Phone: (844) 272-8390

Email: info@motifmedical.com

Web: www.motifmedical.com

Thank you for choosing
the Motif Aura Glow™
Breast Pump

(844) 272-8390

info@MotifMedical.com

www.motifmedical.com

Motif Medical®

8 The Green, Suite 5601

Dover, DE 19901